



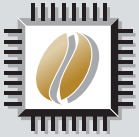
# Neva

Beverage Systems

By Coffetek



COFFETEK



# Why Select Coffetek?

Coffetek have more than 30 years experience in the design and manufacture of beverage dispense systems. Our products have been successfully exported throughout Europe and as far afield as the Far East and Australasia. In the UK we have built an enviable reputation for equipment simplicity and reliability achieved through exploiting our experience in product design and innovation. In addition to our industry leading beverage systems we distribute a comprehensive range of complimentary Snack and Cold Drink vending systems.

## The Neva Range

Designed specifically for hotel, restaurant, catering and office applications, the Neva self-service beverage systems offer the robust performance required for consistent operation in these demanding environments.

Available in four configurations, these compact, table-top systems deliver a complete range of high quality, continental-style coffee and tea drinks that meet all the needs of today's discerning customers.

### **Coffetek guarantees outstanding quality and reliability.**

Reliable dispense systems combine with precise control of product delivery and temperature to ensure total user satisfaction.

#### **Range Features**

- Easy to fill and maintain – single piece mixing systems on all machines make maintenance and cleaning straightforward.
- Easy to use – large, single-button operation for all drink options supported by an integrated LCD vend progress display.
- Finish options – large front display available in Coffetek monochrome or customised brand finish.
- Stand-alone operation – reservoir option available for unplumbed operation.
- Compliant with all current EU legislation.



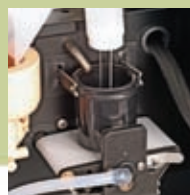
## Neva Duo

Dual hopper – two canister hot drinks

### Neva Duo

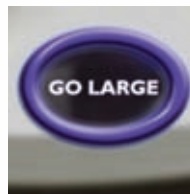
Bean to cup coffees, fresh brew tea, milk and chocolate

- Individual hoppers for coffee beans and fresh leaf tea provide a complete range of the highest quality hot beverages.



### Advanced brewing technologies

Both the coffee and fresh tea Easy Brew® systems are easily accessed and maintained



### 'Go Large' button

Offers a 12oz drink option

### Benefits: Neva Duo

- Dual hoppers – visible coffee beans and fresh leaf tea.
- Operational simplicity – coffee and tea brewing systems are easy to access, clean and maintain.
- Large front panel with clear, one-touch operation buttons. Excellent opportunities for individual branding.
- Go Large option – single button operation allows the flexibility to dispense increased drink size.



## Neva Bean to Cup

Single hopper – two canister hot drinks system

### Neva Bean to Cup

Bean to cup coffees, milk and chocolate

- Robust, advanced bean to cup technology provides sector-leading operational reliability.



### 'Go Large'

Offers a 12oz drink option



### Easy Brew® Technology

Delivers a complete range of high quality coffees without the time consuming, specialist cleaning and maintenance regimes required by conventional brewers.

### Benefits: Neva Bean to Cup

- Operational simplicity - Coffetek's Easy-Brew® technology makes the Neva Bean to Cup easy to clean and maintain.
- Visible bean hopper (160 drinks).
- Large front branding panel with clear, one-touch operation buttons.
- High capacity hot water facility for tea and infusion drinks.
- Go Large option – single button operation increases drink volume to coffee shop style 12oz
- Optional payment system

## Neva 4

### Four canister hot drink system

#### Two drink range options:

- Premium coffee, coffee, milk and chocolate
- Coffee, double chocolate canister, milk



#### Benefits: Neva 4

- Optional payment system.
- Go Large option – single button operation allows the flexibility to dispense increased drink volume.
- Large front branding panel with clear, one-touch operation buttons.
- Optional 30amp power supply model available – rapid heating for higher throughput.



## Neva 3

### Three canister hot drink system

#### Milk, chocolate, instant coffee

- Small footprint makes the Neva 3 ideal for any location where space is restricted.

#### Benefits: Neva 3

- Ultra compact design – small footprint allows the Neva 3 to be fitted in any dispensing or counter-top location.
- Robust operation – can dispense up to three drinks per minute.
- Accepts all standard mug and cup sizes.
- Front graphics panel provides excellent opportunity for individual branding.

# Neva Range - Specification

Drink Selection	Neva 3	Neva 4		Bean to Cup	Bean to Cup Duo
		3 canister	4 canister		
Coffee	•	•	•	•	•
Fresh Leaf Tea					•
Espresso	•	•	•	•	•
Cappuccino	•	•	•	•	•
Café Latte	•	•	•	•	•
Café Mocha	•	•	•	•	•
Chocolate	•	≈	•	•	•
Chocolatte	•	•	•	•	•
Hot Water	•	•	•	•	•
Go Large Option		•	•	•	•
≈ High capacity chocolate					
Other Features					
Coin Acceptor System (side pod)*	•	•	•	•	•

\*Cost Option (accepts 6 coin types)

Specification	Neva 3	Neva 4	Bean to Cup	Bean to Cup Duo
Height	630mm	690mm*	780mm**	820mm**
Depth	470mm	480mm***	510mm	530mm***
Width	260mm	320mm	420mm	550mm
Weight	25Kg	30Kg	32Kg	50Kg

\*includes cup retaining rail \*\*includes hopper \*\*\*excluding hose connection

### Electrical Services

Voltage	230 Vac	230 Vac	230 Vac	230 Vac
Current	12A/2.8Kw	12A/2.8Kw	12A/2.8Kw	12A/2.8Kw
Frequency	50Hz	50Hz	50Hz	50Hz

### Water Requirements

Pressure	Min. 80 Kpa (0.8 Bar) - Max. 1000 Kpa (10 Bar)			
Supply	15mm mains supply from rising main terminating in a stop cock			



Coffetek recommend and supply the 3M range of water filters



Coffetek, Unit 1 & 2, Portishead Business Park, Old Mill Road, Portishead, Bristol, BS20 7BX, England.

Tel: +44 (0)870 224 5316 Fax: +44 (0)870 224 5317 E-mail: sales@coffetekuk.com Web: www.coffetekuk.com

Coffetek pursues a policy of continuing improvement in design and performance of its products. The right is therefore reserved to vary specifications without notice. Colour reproduction is as accurate as possible within the limitations of the printing process.



This equipment complies and is marked in accordance with the legislative requirements of the European Community.